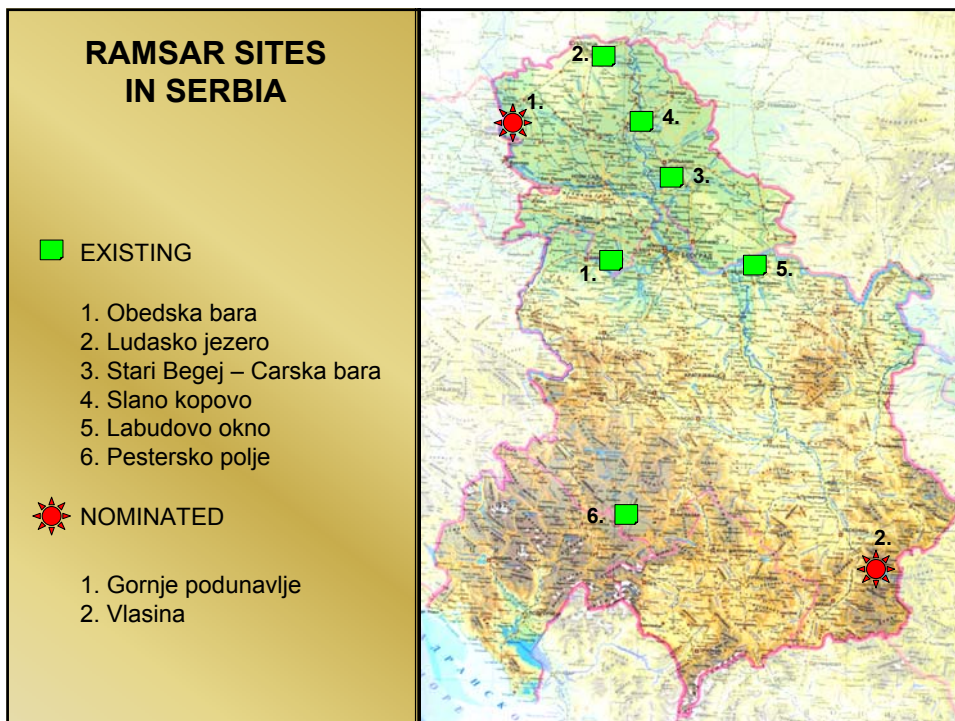




PROVINCIAL SECRETARIAT OF ENVIRONMENTAL PROTECTION  
AND SUSTAINABLE DEVELOPMENT,  
AUTONOMOUS PROVINCE OF VOJVODINA

# RAMSAR SITES IN SERBIA

WITH SPECIAL ATTENTION TO *LABUDOVO OKNO*

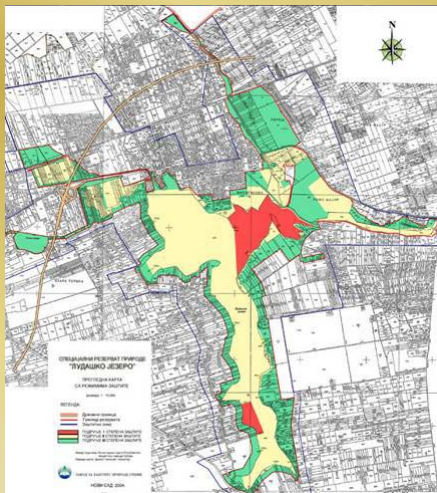




# OBEDSKA BARA



# LUDAŠKO JEZERO



# STARI BEGEJ-CARSKA BARA



# SLANO KOPOVO



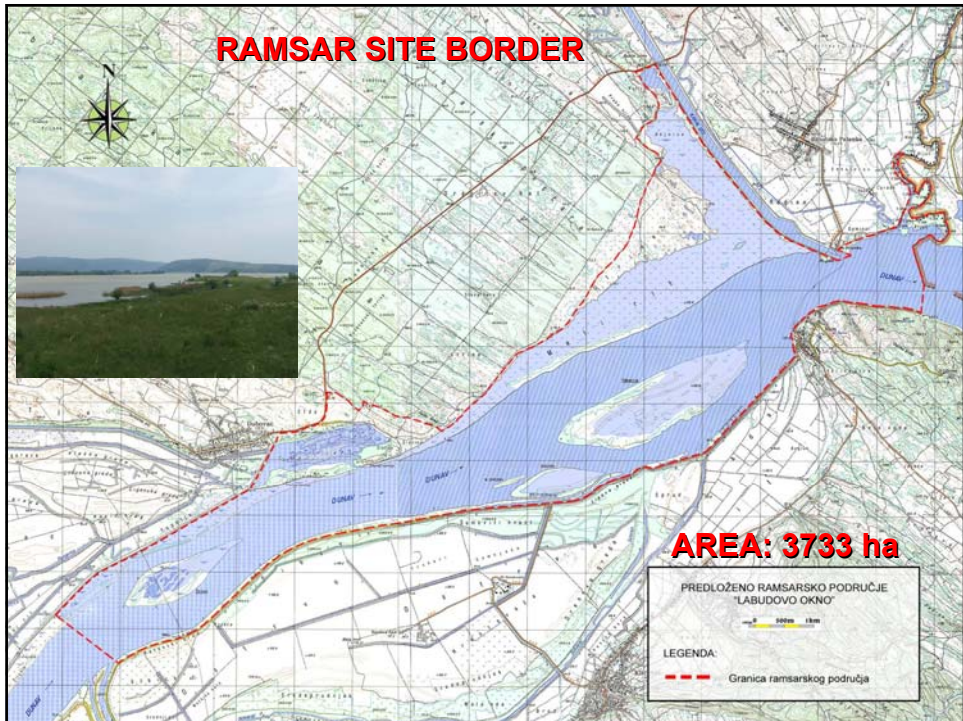
**PESTERSKO POLJE**



**RAMSAR SITE**



**LABUDOVO OKNO**



## VARIABILITY OF HABITATS OF LABUDOVO OKNO AND CRITERIONS APPLICABLE TO THE SITE



**Wetland Type:**

Inland: 

L	<u>M</u>	N	<u>O</u>	P	Q	R	Sp	Ss	<u>Tp</u>	<u>Ts</u>	U	Va	Vt	W	Xf	Xp	Y	Zg	Zk(b)
---	----------	---	----------	---	---	---	----	----	-----------	-----------	---	----	----	---	----	----	---	----	-------

Human-made: 

1	2	3	4	5	6	7	8	<u>9</u>	Zk(c)
---	---	---	---	---	---	---	---	----------	-------

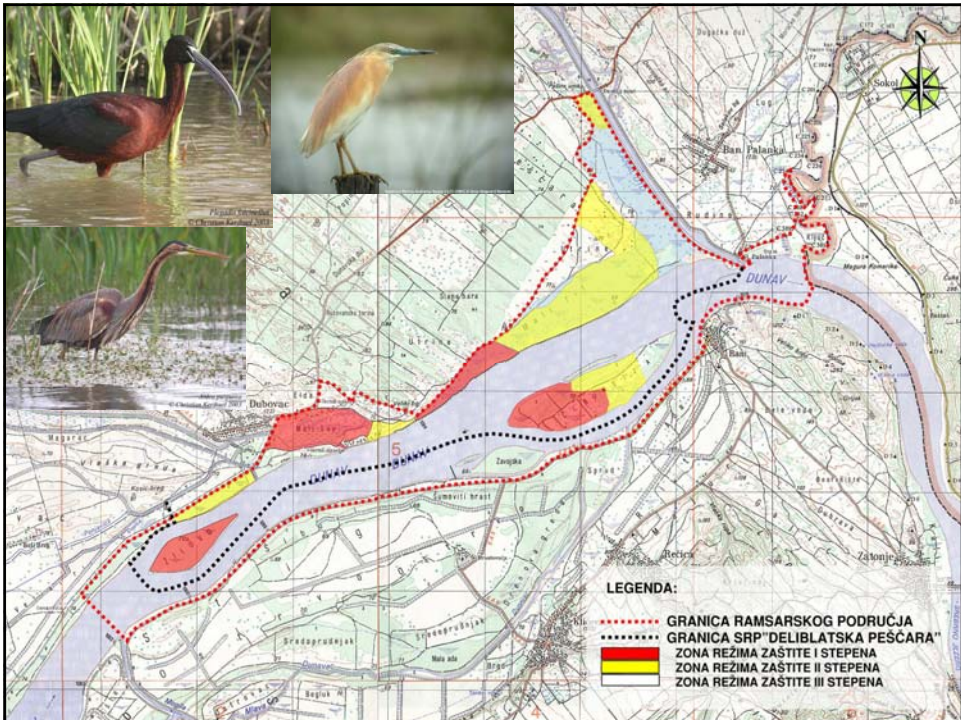
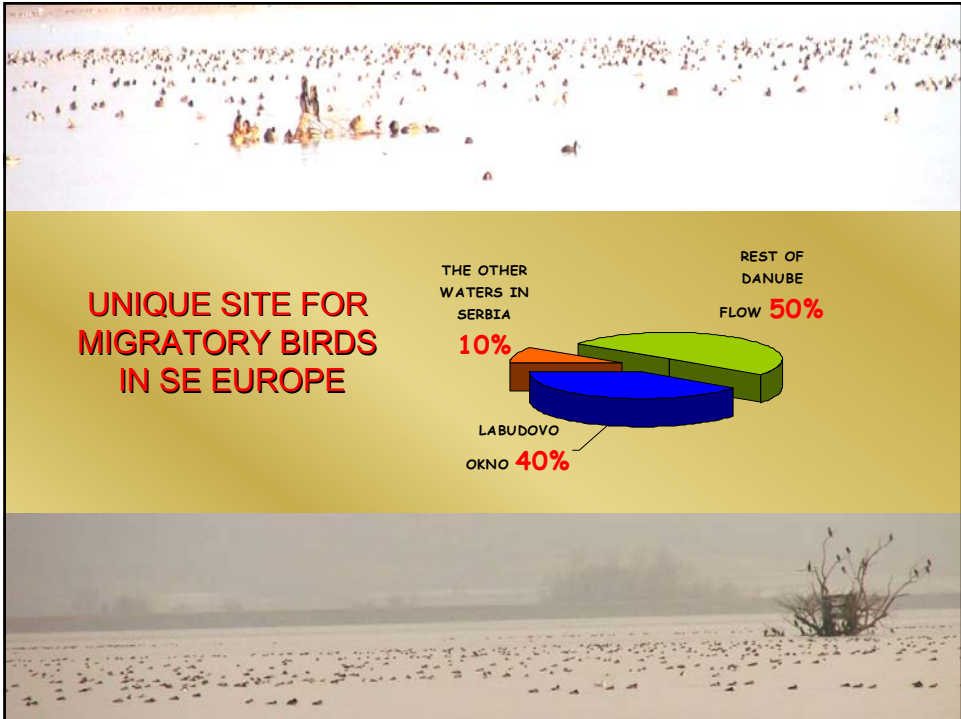
      b) dominance:  
M, Tp, O, Ts, 9

Ramsar Criteria: 

<u>1</u>	<u>2</u>	<u>3</u>	<u>4</u>	<u>5</u>	<u>6</u>	<u>7</u>	<u>8</u>
----------	----------	----------	----------	----------	----------	----------	----------

The most significant criteria applicable to the site: 1, 5, 6, 8





## LIST OF IMPORTANT BIRD SPECIES OF LABUDOVO OKNO

Species	status	I	II	III	IV	1% level
<i>Phalacrocorax carbo</i>	b/w LR:cd	60-70	220	300	1,200	1,450
<i>Phalacrocorax pygmeus</i>	b/w LR:cd	150-250	780	310	2,100	400
<i>Nycticorax nycticorax</i>	b/p LR:cd	250-320	-	25	6	1,200
<i>Ardeola ralloides</i>	b/p VU	100-150	-	27	-	600
<i>Egretta garzetta</i>	b/p LR:cd	240-260	-	122	-	580
<i>Egretta alba</i>	b/w LR:cd	-	47	2	210	470
<i>Ardea cinerea</i>	b/w LR:cd	60-70	40	170	210	2,200
<i>Ardea purpurea</i>	b/p VU	40-45	-	66	2	2,200
<i>Plegadis falcinellus</i>	b/p CR	4-6	-	16	-	530
<i>Anser fabalis</i>	w/p LR:cd	-	1,000	-	600	6,000
<i>Anser albifrons</i>	w/p LR:cd	-	7,000	-	-	7,000
<i>Anser anser</i>	b/w LR:cd	-	2,000	100	300	850
<i>Anas strepera</i>	b/w LR:nt	1-2	140	225	110	1,100
<i>Anas platyrhynchos</i>	b/w LR:cd	100-300	45,000	240	2,250	20,000
<i>Aythya ferina</i>	b/w LR:cd	30-50	27,000	280	110	10,000
<i>Aythya nyroca</i>	b/p VU	20-40	-	35	50	530
<i>Aythya fuligula</i>	b/w LR:cd	-	2,550	185	220	7,000
<i>Bucephala clangula</i>	w/p LR:cd	-	11,000	5	11	10,200
<i>Mergus albellus</i>	w/p VU	-	800	2	-	350
<i>Haliaeetus albicilla</i>	b/w VU	1-2	5	4	5	-
<i>Fulica atra</i>	b/w LR:lc	150-250	30,000	1,650	6,000	20,000



### Meanings of the marks and symbols:

1% level - The Ramsar Criterion 6. of 1% thresholds of biogeographical population of species.

### Data on population sizes in the area:

- I - breeding pairs
- II - wintering individuals
- III - individuals during the spring migration
- IV - individuals during the autumn migration

## LAND USE OF LABUDOVO OKNO



## THREATS OF LABUDOVO OKNO

